




International   
**Capsule**

## MARPE – why, when and how?

 8.30 – 18.30

 Pamiers, France

Saturday  
14 June 2025

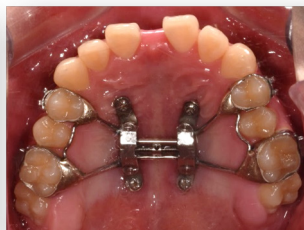
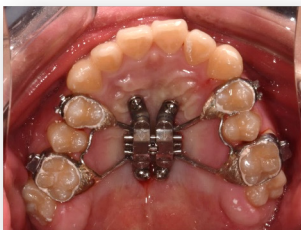


Dr. Kee-Joon LEE

# MARPE - why, when and how?

Transverse discrepancy is not easily recognized by the patient and the orthodontic envelope of discrepancy is reportedly narrow in the transverse direction, which is why surgically assisted palatal expansion is recommended for the correction of maxillary transverse deficiencies in grown-up patients. However, in case of transverse deficiencies, the timing and modality for the transverse correction is often questioned. The validity of either surgical or nonsurgical treatment possibilities need to be discussed based on the following aspects.

- Is the MARPE must for orthopedic expansion in adults? Can regular RPE split the suture?
- If yes, then why bother to use MARPE, using additional miniscrews?
- Again, why MARPE, not bone-borne RPE?
- How about the stability after MARPE?
- What is the success rate of suture separation? What are the solutions for possible non-separation?
- Does failure of separation mean SARPE? If not, what is in-between?
- What is the expansion protocol? 'rapid for adult' and 'slow for child'? Or the opposite?
- In case of nonseparation, more rapid or more slow expansion?
- RPE for children vs MARPE for adults? Or the opposite?
- Does expansion enlarge airway? If so, when?



# The lecturer

- Professor, Department of Orthodontics, Yonsei University, Korea
- Visiting scholar, Dept of Biochemistry, University of Pennsylvania (2002~2004)
- Adjunct professor, Department of Orthodontics, University of Pennsylvania (2010~2011, 2016~2019), Temple University (2010~2011)
- Visiting Scholar, the Children's Hospital of Philadelphia (2010~2011)



Dr. Kee-Joon LEE

# General information



Saturday 14 June 2025



599 Euros incl. VAT



08.30–09.00

Welcome & Registration

09.00–17.00

Conference

17.00– 18.30

Hands-on Part



12 Boulevard Delcassé, 09100 Pamiers



The lecture will be held in English.



For further information, please contact Mrs GOEDDE :  
[annkristingoedde@capsule-med.com](mailto:annkristingoedde@capsule-med.com)  
+33 766996527.



**Capsule SAS**  
12 Boulevard Delcassé  
09100 Pamiers

[www.capsule-med.com](http://www.capsule-med.com)  
[info@capsule-med.com](mailto:info@capsule-med.com)  
+33 7 66 99 65 27